



Imaging a crown fit to partial
with an intraoral scanner.





Clear View of
Tooth



Relationship
between
Tooth and
Partial



Clear 360°
View of
Partial



Clear View
of Tooth



1. **Get a clear, unobstructed view of the crown preparation and margins.**

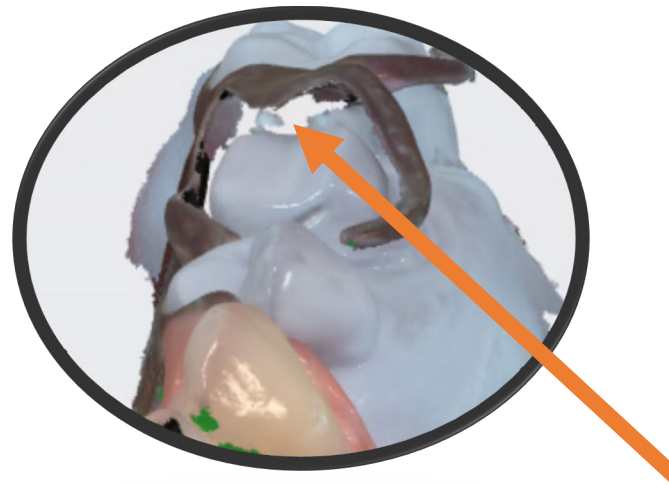


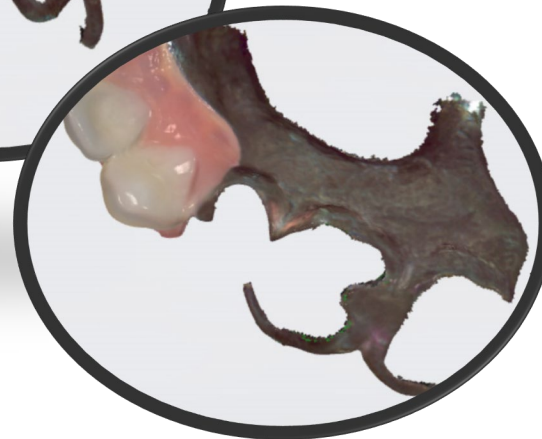
Relationship between Tooth and Partial



2. Get a record of the partial in place.

Scan the intaglio of the partial rest and clasps as much as your scanner will allow. As you can see in this photo, there will be gaps at the most critical parts (the underside of the occlusal rests, the guide plate and the retentive clasps).





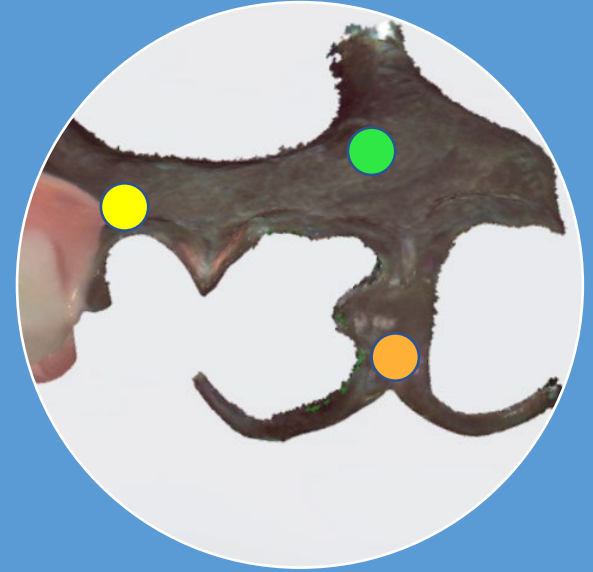
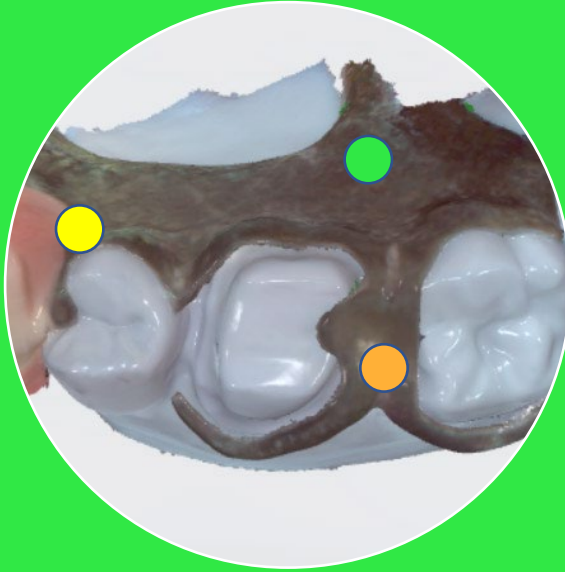
3. Scan the Partial

Scan the partial to accurately capture the rest seats and surfaces that contact the crown.

Capture a generous amount of the lingual and occlusal sides of the partial as well.

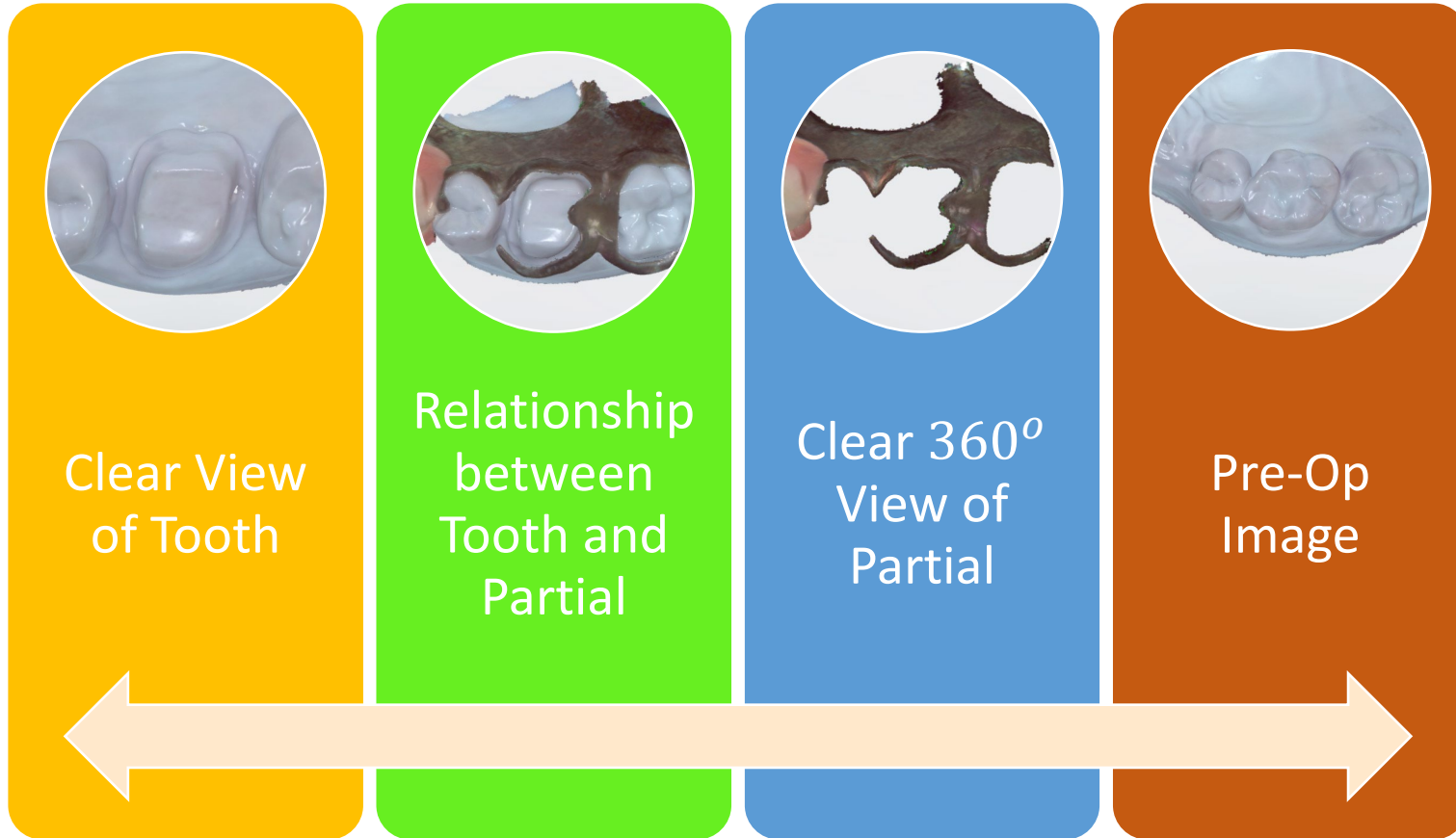
Clear 360°
View of Partial





The design software matches like points in the scan of the partial intaglio with the scan of the partial on the prep and merges the files.

All you have to do is ensure there's enough similarity between the two scans to make a match.



Bonus Image

If the tooth is in-tact, it is also helpful to have an image of the unprepped tooth.

Our technicians also merge this image and use it as a guide for the shape of the new crown.